



sweet water

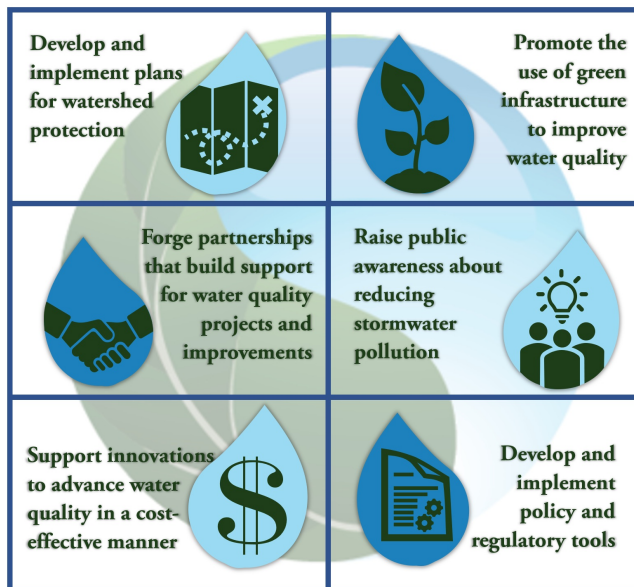
SOUTHEASTERN WISCONSIN WATERSHEDS TRUST, INC.



YOUR MONTHLY UPDATE FOR STORMWATER
PROJECTS, ISSUES & EVENTS IN SOUTHEASTERN WISCONSIN

Sweet Water collaborates with diverse stakeholders in efforts to secure healthy and sustainable water resources in the Greater Milwaukee watersheds. In the Watershed Watch, we share stories each month about the collaborative efforts and projects of ourselves and our partners to achieve this goal. We also share opportunities to engage in this work.

These stories and opportunities take the following actions to secure healthy water resources:



Sweet Stories



Menomonee Group Permit Adopted

The recently issued Menomonee River Watershed MS4 Permit sets the stage for other MS4 (municipal separate stormwater sewer system) permits in the Southeast Region. The 'Watershed' permit includes improvements to the minimum control measure requirements, outlines new expectations for working towards TMDL (Total Maximum Daily Load) pollutant reduction goals, and lays the foundation for a

benchmark approach to water quality improvement. The new permit is a product of collaboration between permittees, their consultants, multiple NGOs, and DNR staff. This collaboration allowed for a permit that continues existing group efforts, sets more clear expectations, and provides additional opportunity for a joint effort to happen in the future.

Click the link below to review the permit and learn more about its implications for SE Wisconsin!

[More on the Menomonee Permit](#)



MMSD Green Luminary: Schlitz Audubon Nature Center

MMSD gives Green Luminary® awards to businesses, organizations, and communities that implement exceptional green infrastructure design projects in the MMSD service area that benefit our lakes and rivers, as well as our communities. In March, Schlitz Audubon Nature Center won a Green Luminary® for their Stormwater Wetland & Ravine Restoration Project.

This project restored valuable habitat, dramatically improved on-site stormwater management, and will help mitigate future erosion. The multi-faceted project includes three constructed wetlands that, in conjunction with other elements, are designed to capture 100-year storm flows.

[Learn More](#)

More Sweet Opportunities

Under Wisconsin's Safer at Home Order, social gatherings of any size are prohibited until May 26th at 8:00 am. Please continue to follow the guidelines of this order. Interested participants of any event following the completion of the Safer at Home Order should follow any continuing social distancing guidelines released by the state.

Please continuously check the links to any events found below, in case of cancellations.



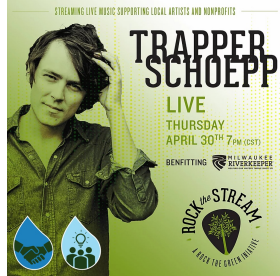
Care for Your Community- Adopt A Drain

Adopt Your Drain allows community members to 'adopt' a nearby storm drain in an effort to prevent stormwater pollution. Rainfall and snowmelt carry pollutants like litter, pet waste, leaves, and more into the storm drains. Oftentimes, these pollutants either clog the drains, leading to street flooding, or flow through the storm sewers directly to our lakes

and rivers.

When people sign up for Adopt Your Drain, they are asked to keep their drain clean, especially before and after rainfall. This program allows residents to get involved in helping to prevent stormwater pollution without even leaving their street, making it easier than ever to help care for our local environment and communities while still practicing social distancing.

[Adopt Your Drain](#)



Rock the Stream

Introducing Rock the Stream, a benefit for Milwaukee artists & environmental non-profits.

Each week, Rock the Green will be featuring a past performer from Rock the Green's Annual Earth Day Celebration and Sustainability Festival. Artists will be paired with an environmental non-profit, and 100% of the funds donated from the live-streams will be split equally between the artist and non-profit.

Tune in for the first concert on Thursday, April 30th at 7:00 pm CT. This concert, performed by artist Trapper Schoepp and benefitting Milwaukee Riverkeeper, will be available on [Facebook](#) and [Youtube](#).

[More about Rock the Stream](#)

Sixteenth Street Habitat Restoration Internship

SSCHC's Department of Environmental Health is restoring habitat along the KK River. The restoration will remove invasive species, create habitat for migrating and resident bird species and pollinators, increase native tree canopy and ecosystem resiliency, and reduce runoff into the river, ensuring a safe space for people to enjoy nature.

Applicants ages 16-24, especially those local to the KK River area, are encouraged to apply for this paid internship by May 15, 2020. Internship will last from July to August of 2020.

[Learn More](#)

Wisconsin State Parks And Forests To Reopen May 1

Thirty-four closed Wisconsin state parks and recreation areas will reopen Friday, May 1.

Under Gov. Evers Badger Bounce Back Plan, the DNR will modify operations to maintain the safest environment for all.

To allow for social distancing requirements and to maintain a safe experience, the parks and areas reopening will have property conditions, updated hours and other special conditions. Restrooms will be closed and entrance fees will be back in effect.

[More Info about Park Changes](#)

Southeastern Wisconsin Watersheds Trust, Inc.
600 E Greenfield Ave
Milwaukee, WI 53204
info@swwtwater.org



This email was sent to {{ contact.EMAIL }}
You received this email because you are registered with Southeastern Wisconsin Watersheds Trust, Inc.

[Unsubscribe here](#)

Sent by
 sendinblue

